

Swanland Village Association
NEWSLETTER

Distributed FREE to every
household in the Village



www.swanland.info Autumn 2021 No. 93

From the Chairman of the Village Association



The Swanland Village Association works very hard on your behalf for the good of our community. For about 30 years it has ensured that Swanland's army of volunteers has supported our village and made it a very desirable place to live.

This SVA Newsletter is carefully collated and distributed to every house in the village by hand, keeps us all in touch with local news and advertises local shops and companies.

Our SVA AGM will be held on **Thursday 11 November at 7pm** in the **Village Hall**. After the short business side our **speaker** will be **Will Hardcastle from Omya** who will speak to us about the **Quarry in Melton**. This is especially relevant as they marked their hundred year anniversary just recently. Cheese and wine will conclude the evening.

Do join us! You'll be most welcome!

Our volunteer groups keep the streets clean, plant flowers and bulbs around the village, water the flowers around the pond on a daily basis in the summer, maintain the pond regularly in conjunction with the Pond Partnership and Parish Council, support grant applications, help village groups with funding requests and try to keep up to date with social media etc..

We also host the Swanland Festival, which we hope will go ahead next summer.

We desperately need to increase our SVA membership, and it is only £2 per year! So please will you help us by joining via the information on the back page. We thank all our loyal members for their ongoing support and hope that we can encourage the newcomers to our village to join too.

Thanks to all our volunteers who give so much of their time to our community. If you think that you could help in any way, please contact a committee member who would be delighted to speak to you! We all need to work together to ensure that Swanland continues to have a thriving and vibrant community.

Jan Rogerson 634 583

Swanland Village Association Committee

Chairman	Jan Rogerson	634 583	jr@swanland.info
Vice Chair	-----		
Treasurer	David Walker	637 085	dw@swanland.info
Minute Secretary	Janet Selvage		js@swanland.info
Membership			
Secretary	LouiseMacfarlane	632 800	lmac@swanland.info
Newsletter			
Editor	Marion Escreet	632 903	newsletters@swanland.info
LitterPicking			
Rota	Christine Walker	637 085	cw@swanland.info

Newsletter Distribution –June and Allan Rymer.

We are most grateful that June and Allan have volunteered to take over from Angela and Keith Carpenter who have moved away from the village. We would like to thank both Angela and Keith for all the time and work they have put in to count out the Newsletters so efficiently and to get them to the people who distribute them to every house in the village.

The Gardening Group

Once again the small group of volunteers has been busy all summer. New half barrel planters and flower bed were prepared for summer bedding. The bedding plants were kindly provided by **GB Flowers** (Mark Hughes) at cost price. **700** plants were delivered in pouring rain so we all got very wet indeed, but got the job done as quickly as possible!



We are very grateful for the donation of £200 from **McCarthy and Stone**, arranged by Joanne Harris at their Stapleton Court complex on the junction of Tranby Lane and Waller Grove. It was given *'In support of Swanland Village Association - Gardening Group, providing replacement Half Barrel planters and the planting out of flowerbeds in the centre of the village, around the village pond and the War Memorial.'*

The hayracks came from **Deepdale Garden Centre at Barton** and, as usual, have been very colourful all summer.

We are urgently looking for **more volunteers** please to help out with the bulb planting which ~~soon~~. It would ~~spread~~ the load if we had more people to lend a hand and your help would be much appreciated.

For more details: **www.swanland.info** Village Activities and Gardening Group or talk to us on a Tuesday morning, as we are working at the pond.

SVA Membership

The SVA do **need new members** to help support village activities as listed in the Chairman's letter.

Please consider joining - £2 per person for a year.

There is an Application form on the back page of this Newsletter and details of where to send it.

If you wish to pay by Bank Transfer you must still fill in the form so that we know who has paid and we can issue a membership card.

Bank details are:

Santander Business Account. Sort Code: 09-01-28 Account No: 97128743

Swanland Village Hall



The Village Hall is thriving

again!! Every day there are classes for our children: dancing, athletics, music with mummy. There are U3A events, and Hesse Sinfonia has restarted. There are classes to get fit in both mind and body.



One off bookings. There are private bookings for parties. We recently hosted a very successful pre wedding party.

We can do more. Not every room is booked all the time so if you need us check the website (below) for contact details.

Queen & Jubilee. Next year there is a super bank holiday weekend for the Queen & Jubilee at the start of June. The Village Hall is reaching out to all the other charities in the village to see how we can make our contribution, make a splash in our beautiful village. Please let us know if you have any ideas or can contribute.

Live Entertainment Returns. The theatre **The Catch** 'd u c s coming to the Hall on **Sunday 17 October 2.30pm**. Tickets £10. For tickets **01482 862 752** or email: **otherlivesproductions@yahoo.co.uk**

New Trustees There are still empty seats at the table. If you have a little time to spare helping at this great community resource, please let us know. Contact: <https://swanlandvillagehall.info> *Neil Bowerman - Chair*

Swanland Show

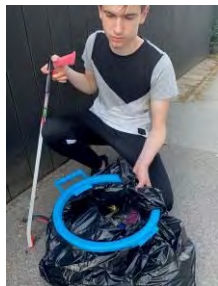


The committee made a decision earlier on in the year, to postpone the show for the 2nd year. However, we are very optimistic that the show will go ahead next year on the 2nd Saturday in September, and at St Barnabas church hall, so we hope that we can continue from where we left off. As yet, we have not made a decision on whether we will have a plant sale. In previous years, the plant sale has been a major source of income, which contributes towards the running of the shows.

Please check on www.swanlandshow.wordpress.com to keep up-to-date with important dates and information.

Sarah Hayden

Litter picking



Congratulations to Ruben who chose to help the environment and litter pick in and around Swanland for the community service section of the bronze Duke of Edinburgh's award.

Ruben is a pupil at South Hunsley School and has completed three months of litter picking.

Thank you to all the volunteers who came to help with the whole village litter picking event in September. Volunteers gave up their Saturday morning to collect litter on the streets of Swanland. A number of children and families took part as well as some new volunteers. The main roads into the village once again gave cause for concern - 10 discarded wine bottles were collected on Greenstiles Lane!

This year volunteers have completed in excess of 250 hours litter picking in Swanland. A huge THANKS to you all for this massive achievement. This all helps to keep Swanland a nice place to live.

Swanland Village Association organises three 'whole village litter picking days' each year. The next one is in March 2022.



We need **new volunteers** on the weekly litter-picking rota to keep the village centre clean. This takes about two hours approximately every 8 months. If you can help on the rota or wish to borrow equipment through the loan scheme please contact me:

Christine Walker cw@swanland.info or **637 085**

A big thank you to Michelle (our Parish Clerk) and the East Riding of Yorkshire Council for the long term loan of a handy manoeuvrable litter picking trolley. It is much appreciated by the litter picking volunteers.



Swanland Pond Partnership



Our annual cutting back of the reeds is planned for **Saturday 23 October from 9:30am. We urgently need more volunteers** to help with this essential task. If you would like to help on the day, or at a future event, **please contact Alyson on 634 168 ASAP.** The pond is a beautiful asset to our village which is enjoyed by the whole community, but its beauty is due to Mother Nature **PLUS** volunteers. **Please consider being one of those volunteers.**

Water levels have been variable over the year, and we have had recurring problems with algal blooms. Our temporary aeration system was installed in June to improve oxygen levels for the fish and other wildlife. We also carried out a “mini trim” of the



We hope you enjoyed reading the Swanland Pond leaflet included in the S Regarding the p r
historical origins of the pond, Geoffrey Collier has been in contact to clarify that although Swanland pond is very likely to be a natural ‘ d
link its origins either to the Roman period or the eighteenth century. It is more likely to be prehistoric, used by the earliest residents and their stock. Records from the 16th century show that the pond (formerly known as Swanland Dam) was such an important source

of water that anyone allowing their ducks or geese on to it was fined for pollution!

We are grateful to Geoff for highlighting the inaccuracies in the leaflet And we hope to correct them in future re-prints.



Swanland Heritage Centre



The Centre's Committee welcomes two new members. Lisa Martin is the Centre's new Schools Liaison Officer and Deborah Parry is Treasurer in succession to Colin Jackson, who



wishes to retire from that role, but happily not from the Committee.

On 7 and 8 August, Graham and Jean Latter of Mill Rise held an Open Garden, with free entry and donations kindly going to the Centre. The Beverley & District Pipe Band, under the command of Pipe Major Paul Wright of Mill Road, performed Chairman, Martin Parry, in the P
the Sunday.

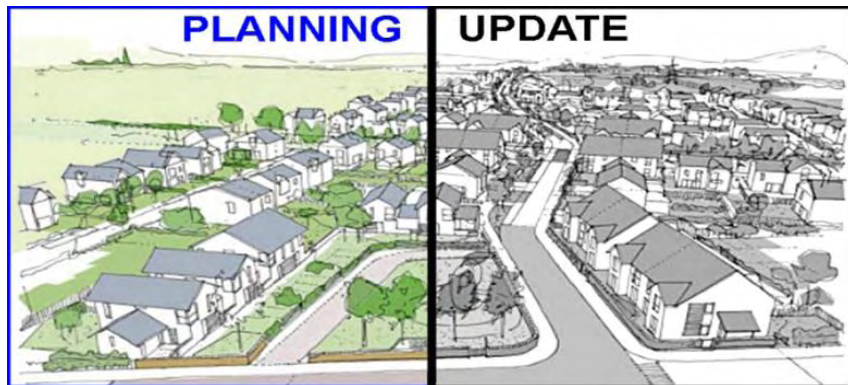
During the September 2021 Heritage Open Days the Centre opened both weekends, for the first time since Lockdown. Otherwise, it opens by appointment –please ring either **632 576** or **633 286**. We hope, however, to open before Christmas. Details will be given on our webpage <https://swanlandheritage.info/index.html> which is constantly updated.



Christ Church Saturday Coffee Mornings



We are back! The south vestry is hosting a Saturday coffee morning again from 10.30 to 12 noon. We are following government Covid guidelines and the room is well ventilated. We hope you will come and join us and meet friends for a chat.



Refreshed Local Plan

Under the proposed (Refreshed) Local Plan for 2020-2039 no new sites have been added to Swanland to those already under construction.

Westfield Farm

Not in the original or refreshed local plans, the Gladman saga continues. An appeal decision to allow it is being contested by ERYC in the High Court. Whatever the outcome the access problem has still not been resolved. Should we manage to stop this development no doubt Gladman might try again in the future –they only have to get lucky once!

West Leys Road

The two large developments should be completed in about 12 months and will add 156 houses to the village. The Village Map will be updated.

o Y k p f h c n n ö " f g x g n q r o g p v u

Plans for 4 new houses at Easenby Lodge in addition to the 8 in Easenby Close have recently been approved. These so called "In-fill" developments are not covered by the local plan, but still add bit by bit to the increase in houses.

Ferriby Development

There is a planning application for a large development of 119 houses in Ferriby off Ferriby High Road. This would increase traffic at Ferriby crossroads in addition to that from Swanland's two large developments on West Leys Road.

Swanland Bowling Club



Our short season has now come to an end. As the COVID restrictions were eased we were able to start competitive matches and half a season of matches was enjoyed by all.

It has been a successful season for all of our teams culminating in one of our ladies winning the National singles competition. Also our ladies won the final of the Humberside Top Six competition.

We have welcomed some new members, as the season has progressed, and we look forward to more new players coming forward in April next year.

Margaret and Peter Dickinson 634 309

Swanland Village Website

www.swanland.info



The website has a vast amount of information about Swanland and its numerous organisations. It was originally set up by the SVA in 2003 and since then has over 77000 "hits".

For many years Graham Latter has operated it independently. It is updated daily with local news and provides a platform for anyone with potentially controversial views.

There is a modest cost involved (around £10 per month) for various server fees etc.

We are looking for a local business sponsor to offset these costs.

Swanland WI



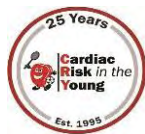
We finally had a face to face indoor meeting at Christ Church near the pond on 1 September after 18 months. Covid safe measures were observed to ensure everyone therefore numbers were restricted to 25. Everyone enjoyed seeing one another again, listening and chatting in familiar surroundings. An interesting, illustrated talk was given by two members, so whisking everyone to a whirlwind trip of life down under in Australia.

If any local ladies are interested in joining the WI please get in touch to find out more. Unfortunately due to the current situation relating to Covid, we are not able to accept visitors at the moment. Please do not let this put you off, we can add you to our waiting list and keep you informed via email/letter and then, all being well, a place will become available for you to visit and subsequently become a full member.

Please contact us at swanlandwi@eastyorkshire.org.uk
or *Julia* 07786 130 279

 <p>AUTOMOTIVE SOLUTIONS LTD</p> <p>MOBILE MECHANIC IN SWANLAND</p>	<p>PICK UP & DROP OFF SERVICE</p> 	<p>Service & M.O.T.</p> <hr/> <p>Warning lights & diagnostics</p> <hr/> <p>Battery & electrics</p> <hr/> <p>Suspension & steering</p> <hr/>
<p>A convenient & cost effective way to service or repair your car</p>		<p>Over 23 years experience</p>
<p>Call: 07714 255926</p> <p>Email: info@automotivesolutions-hull.co.uk Website: www.automotivesolutions-hull.co.uk</p>		

Jamie Loncaster Memorial Fund at CRY



Cardiac Risk in the Young has been to South Hunsley School to carry out around 150 heart screenings for young people aged 14-35 within 6 hours of the booking going live!

Sadly though, in the last 18 months, around **600 young people have missed out on a FREE heart screening** with us due to Covid restrictions. Our planned screenings for 2022 are in April and October, so please check our social media feeds and website (www.jamieloncaster.co.uk) for notifications and booking details.



Back in November 2020, Graham & Jenny walked 12 miles in one day around Swanland and North Ferriby to highlight young cardiac deaths as part of the CRY **÷ 3 4 " c challenge** . S t a t s **12 young people aged 14-35 die EACH WEEK** from an undetected heart condition and **80% have no prior symptoms** – j u s t l i k e **#JamieRemembered**.

Sadly, we will **not** be hosting our **Annual Coffee Morning** this year. We hope to be back again in 2022. *Thank you for your continued support.*

Swanland Neighbourhood Watch

SWANLAND



Crime prevention advice:

As n i g h t s d r a w i n , d o n ' t l e a v e c a r s u n a t t e n d e d o n d r i v e s a n d i n g a r d e n s .

Lock cars, keeping valuables out of sight, including when parked on drives.

Place car keys visible on hall tables etc. and always keep them nearby at night (break-ins can occur where keys are taken and cars stolen).

Owners of vehicles with keyless ignition can buy signal-blockers to prevent thieves using devices held outside the house to start cars.

Be very wary of **unsolicited** telephone calls, texts and emails; scammers are taking advantage of the Covid-19 situation. Forward suspicious emails to the Suspicious Email Reporting Service: report@phishing.gov.uk; forward **suspicious texts** (free) to **7726**.

For information on Swanland NHW or becoming more involved as a Street Coordinator: contact *Deborah Parry*: **632 576** or dparry@inbox.com

Swanland Tennis Club



Our friendly club has excellent Covid secure facilities including 5 all-weather courts - all with floodlights which can be booked via our online court booking system. We have informal mix-in sessions (pre booked only) **Sunday and Tuesday mornings (10am onwards)** and **Monday and Thursday evenings (6pm onwards)**. Tennis balls and floodlights are provided free at club sessions. We also have a range of teams to suit all, and tournaments and social events throughout the year when regulations allow. New members are offered a ½ hour free coaching session with Teo Arkut, our club coach. Teo also organises group and private coaching sessions for all ages and abilities all year round.



To join please follow the membership link www.swanlandtennisclub.com or contact the club representatives below.

If you would like to arrange to use the courts for a **free trial session** this can be done through the club contacts:

Teo: **07890 783 807** teotennis@hotmail.co.uk or

Simon Lee: **07872 403 880** swanlandltcsecretary@gmail.com

Swanland u3a - moving forward

This year Swanland u3a is 25 years young! We are celebrating with 'C a r a o l s C a l e n d e r' at 2pm at St Barnabas hall and have a special section on the website for members to share their memories of the u3a. Our Literature Groups are also celebrating their 25th and calculate that they have read over 500 books since their inception! Now it is the turn of the Walking Groups to calculate how many miles they have walked over the quarter century!

Throughout the pandemic we have maintained activities through Zoom and have featured on Radio Humberside and hosted a Zoomed conference on 'P o s i t i v e A g e i n g'. We are returning to a consultation with our membership and welcome all retired people wishing to maintain their current interests and develop new ones in a friendly atmosphere. Our Liaison is Lillian Pepple:

For more information or to join email: info@swanlandu3a.org.uk

North Ferriby Craft and Produce Market



To be held on **Saturday 27 November**,
10am-2pm

In **North Ferriby Village Hall, Church Road, HU14 3AA**

This is the Christmas Market featuring a host of ideas and gifts for the festive period.

There will be a varied selection of food producers plus work by local artists and crafts people.

Festive fare will be available from the kitchen.

Come and join the fun, supporting local enterprise and raising funds for the Village Hall.



GREENS WATER SYSTEMS
Water Technology Stores

Serving Swanland for over 25 years with Water Softeners, Filtration Systems and Cartridges, Softener Salt, Quookers and much more.

For expert local advice and service please visit our New Store or call David Parry on 01482 351 769

d.parry@water-systems.co.uk

647 Anlaby Road
Hull HU3 6SX
(Mon-Thurs 10 - 4)

RONALD COGAN & SONS Ltd.

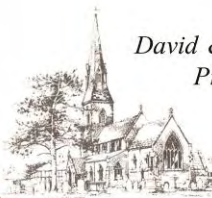
Funeral Directors

Sherwood, Station Road
North Ferriby
East Yorkshire HU14 3DJ

01482 631740

01430 449099

www.coganferriby.co.uk



*David & Lynda Cogan
Proprietors*



Mires Beck Nursery at North Cave



A Garden Of Sanctuary:

Mires Beck is now an accredited Garden of Sanctuary, designed to welcome refugees and asylum seekers to our community, and for them to have a safe space to visit. It includes plants and fruits that may have been in their original countries.



A Flowering Cherry: We have been accepted as a recipient of a flowering cherry tree from the Sakura Cherry Tree Project - one of 6,000 trees planted in schools, community projects and public gardens across the UK as a gift from the Japanese people to promote an ongoing friendship between our countries.

Trees: We've recently increased our increase it further by leasing glass houses at a site near Pocklington. Find out about upcoming workshops at www.miresbeck.co.uk



Mobile Foot Health Practitioner

Abgail Cotton
0785 292 1247
kayembaabi@icloud.com

Treatments are tailored to each individual's needs including:

- Hard Skin
- Corns
- Verrucas
- Diabetic Feet
- In-growing Toenails
- Heel Cracks & Fissures
- Fungal Infections

Look after your feet!



CLASSIFIEDS

Mobile Hairdresser
Covering Swanland, West Hull and surrounding villages
Over 30 years experience in all aspects of hairdressing.
Telephone **Claire 01482 635 098**
or 07831 601 767

Swanland Village Association

Do you live in the village?

Would you like to help to preserve Swanland as a good place to live?

Join the Village Association, using the form at the back of this newsletter.

We are also looking for volunteers to serve on the Committee and to help with the various tasks involved in maintaining the

village environment. Please help - nothing too onerous! Contact any committee member via

www.swanland.info/sva



**YOUR
Village Association needs
your support!**

Please join us

Just fill in the form below

and deliver or post it to:

Louise Macfarlane, 15 Mill Rise, Swanland
HU14 3PN

or to:

David & Christine Walker
3 Holgate Place, Swanland HU14 3QX
(opposite Cherubs shop)

It's just £2 per household (Swanland Village Association). *Make our job easier by paying by Standing Order.*

You will receive a membership card.

YOUR Next Newsletter

Articles and requests to give notification of forthcoming events should be sent in electronic format please to the Editor at:

newsletters@swanland.info

The Newsletter is distributed to ALL houses in Swanland, making it ideal for local advertising.

PLEASE NOTE: The deadline for next Newsletter to be published in Spring will be 14 February 2022. Details also shown on the village website:

www.swanland.info

We cannot guarantee to publish articles (maximum 150 words) and reserve the right to edit them. We welcome photographs to print where appropriate.

SVA Membership Application/Renewal

Name (first person) _____

Name (second person) _____

Address _____

E-mail address/Telephone number _____

Cheque/Cash (£2 per person) or request Standing Order form.

The SVA Newsletter is published and distributed free to every household in Swanland. Print costs are met by the SVA and a limited number of local advertisements.

Forward information or articles to the Editor

e-mail: newsletters@swanland.info

To receive news updates from the village website: e-mail website@swanland.info